



30th MALASPINA ANNUAL REGATTA

Saturday – June 29, 2019

REGISTRATION AND ENTRY FORM

Skippers Name _____

Address _____

Postal Code _____

Email Address _____

Phone Numbers: Res _____

Business _____

Boat Name _____

Boat Make/Model _____

Length Overall _____

Sail Number / or Logo _____

Hull Colour _____

PHRF Rating (If known) _____

Assigned Rating _____

Deliver this form and Fee of \$25.00 to the Race Committee at the Legion, Madeira Park between 4:30 pm and 5:30 pm on Friday, June 28, 2018.

BBQ Tickets will also be available for \$20.00 each

Make cheques payable to the Garden Bay Sailing Club

Malaspina Annual Regatta Waiver

In consideration of acceptance of this entry, I acknowledge that my boat is my responsibility, and that I will be entering this program at my own risk and will save harmless the M.A.R Race Committee and all others involved in organizing and managing this program from any liability, actions, claims or demands whatsoever, that may arise from participating in this program.

Signed _____

Date _____



30th. ANNUAL MALASPINA REGATTA

Saturday June 29, 2019

RACING INSTRUCTIONS

1. **Registration:** Friday June 28 at The Royal Canadian Legion, Madeira Park from 4:30 pm to 5:30 pm.
2. **Skippers Meeting:** Friday, following the Registration at 5:30 pm. Any changes to these Racing Instructions will be announced at that time.
3. **There will be 7 awards:**
 - First Overall (On Corrected Time)
 - First Across the Line (Line Honors)
 - Division 1 PHRF Rating of Under 100
 - Division 2 PHRF Rating from 101 to 164
 - Division 3 PHRF Rating from 165 to 194
 - Division 4 PHRF Rating of 195 and greater
 - Race Committee Award..... Garden Bay Sailing Club
4. **Register with Committee Boat:** All competitors are asked to pass by the Committee Boat and call in on VHF Channel 8 so that they can be recorded, and to verify that their VHF's are working.
5. **The finishing order:** Will be decided using the handicapping system. Vessels that do not have a PHRF rating will be given one and the corresponding (TCF) at registration time. This number will be multiplied by the total time the vessel takes from start horn to vessel's finish horn to determine the corrected time.
6. **The Course:**
 - Start Line:** Between Lateral Beacon on Nares Rock and an Orange Tetrahedron Float off the North side of Martin Island. ("Sonoran Sea" will be positioned on the other side of Nares Rock)
 - 1st Mark:** Hospital Reef (Orange Tetrahedron Float) to be taken to Starboard
 - 2nd Mark:** N.W. of Acland Rock (Orange Tetrahedron Float) to be taken to Starboard
 - 3rd Mark:** Nares Rock to be left to Port
 - 4th Mark:** Hospital Reef to be taken to Port
 - 5th Mark:** Lateral Beacon (at mouth of harbour) to Starboard
 - Finish Line:** Between Committee Boat, near Lateral Beacon (inside the entrance of harbour), and Orange Tetrahedron Float off west end of Skardon Islands

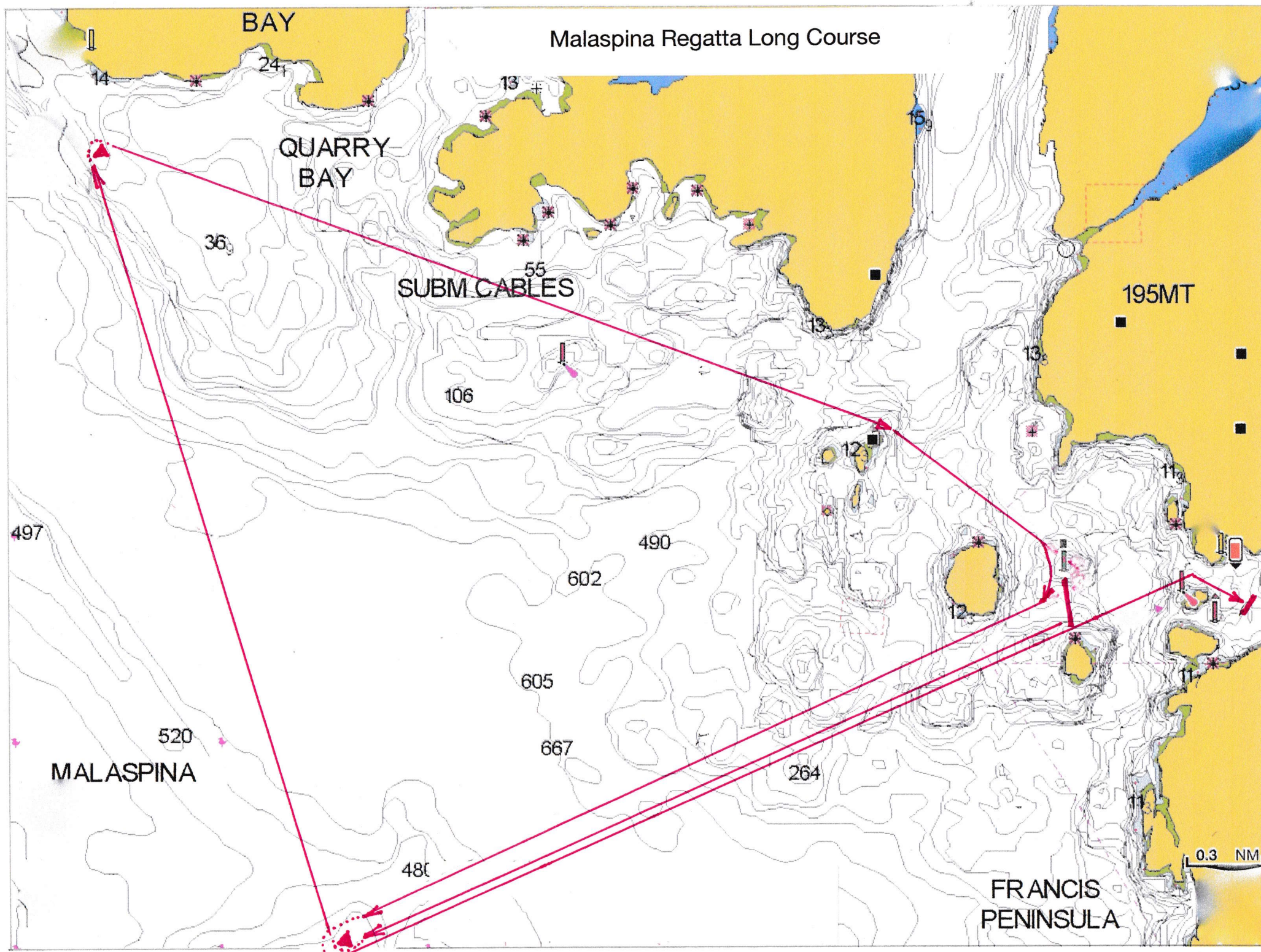
N.B. All boats must pass through the main entrance to Pender Harbour to finish.
7. **Mark Coordinates:**

Marks	Latitude	Longitude
Start line: Nares Rock (Lateral Beacon)	49 - 37.833N	124 - 04.317W
Start line: Martin Island (Tetrahedron)	49 - 37.623N	124 - 04.255W
Hospital Reef (Tetrahedron)	49 - 36.340N	124 - 08.510W
N.W. of Acland Rock (Tetrahedron)	49 - 39.437N	124 - 09.805W
Nares Rock (Lateral Beacon)	49 - 37.833N	124 - 04.317W
Finish Line: Committee Boat	49 - 37.695N	124 - 03.377W
Finish Line: Skardon Island (Tetrahedron)	49 - 37.769N	124 - 03.227W

See attached sketches of the courses.
8. **Start For All Divisions:** The starting sequence will begin at approximately 10:55am.
9. **Starting Sequence will be as follows:**
 - 6 min before start.....4 short signals as warning.
 - 5 min before start.....Sound signal and White Flag raised.
 - 1 min before the Start..... Sound signal and White Flag lowered. Black Flag raised.
 - START..... Sound signal and Red Flag raised
 - Note: **No motors are to be running after 5 min signal**, and White Flag is raised.

10. **Black Flag:** This race will run under the Black Flag Rule (30.4). “No boat is allowed in the triangle formed by the ends of the starting line and the *first* mark (Hospital Reef) during the last minute before the start. Any boat breaking this rule will be disqualified without a hearing”.
11. **Individual Recall:** It is the skipper’s responsibility to know if his/her vessel is over the line early at the start. However, the race committee will try to inform any yacht that is over the line early by VHF radio on Ch 8. In the event of an individual recall the committee boat will raise a white flag with a blue cross (letter X). Early yachts must keep clear of yachts racing and return across the line to restart.
12. **General Recall:** In the event that a number of yachts are over the line at the start, or there is an error in the procedure, the race committee may make a general recall. Two sound signals and display of the 1st. substitute flag. (Triangular - blue outer/yellow inner). The race committee will also advise on VHF Ch 8.
13. **Race Duration:** There will be a time limit of 5 hours allotted for the completion of the race. Any vessels that have not completed the course within this time will be given a DNF (did not finish).
14. **Postponement:** In the event that a postponement is necessary, the committee boat will sound two long blasts of the sound signal and will display code flag AP (answering pennant) Red/White vertical stripes. The race committee will also advise on VHF Ch 08.
15. **Shorten Course:** In the case of very light winds, and in order to complete the race on time, it may be necessary to shorten the course after the race has started. The race committee boat will position itself adjacent to the mark, on the outside of the Course, where the race will finish. They will then make a general radio announcement on VHF Ch 08. A white flag with blue square (letter S) will be shown by the committee boat.
- If winds are medium to light, then the Short Race Course will be used, see diagram. Please note in this case boats will take Pearson Island to Port after rounding Akland Rock.
16. **Safety:** In the interest of safety, and to permit better communications between the race committee and competing vessels, VHF channel 8 will be used for any communications required for the duration of the race. Strict radio silence between competing vessels is to be observed from the 5 minute sound signal until 5 minutes after the start. During pre-start maneuvers, and up to the start time, each boat with a foresail hoisted shall maintain a bow lookout. Please switch to channel 8 (5 watt) once you have started.
17. **Retiring:** Any vessel that retires from the race must report to the committee boat in person or via channel 8 VHF.
18. **Disclaimer of Liability:** Competitors participate in the regatta entirely at their own risk (Rule 4 Decision to Race). The organizing authority, MAR Race Committee, and all others involved in organizing and managing this regatta, will not accept any liability for material damage or personal injury or death sustained in conjunction with or prior to, during, or after the regatta.
19. **Insurance:** All participants must include with their registration a copy of their Certificate of Insurance indicating that their boat is covered by a minimum of \$1 million liability. A copy of this certificate must be carried on board at all times
20. **Rules:** The Rules governing this race are the Racing Rules of Sailing for 2017- 20 by the Canadian Yachting Association, **but protests will be frowned upon.** However, vessels wishing to protest must do the following:
- inform the boat that you are protesting them.
 - attach a “B” pennant or red flag to the backstay and fly it until the committee boat has been notified of the protest.
 - in order to obtain a protest from the Race Committee the protest vessel must present the Race Committee with a 40oz. bottle of Single Malt.
 - if the protesting yacht loses the protest, the “protest fee” will be forfeited.

NOTE: the message is plain. **This is a FUN race.** Boats may not be able to react quickly, so do not force right of way situations, even if you are technically correct.



BAY

Malaspina Regatta Long Course

QUARRY BAY

SUBM. CABLES

195MT

MALASPINA

FRANCIS PENINSULA

0.3 NM

Malaspina Regatta Short Course

